

2022-2027

BOND

PROGRAM

City of San Antonio



PUBLIC WORKS

**Heritage Neighborhood
Park**

Public Input Meeting

February 21, 2023 | Presented by Public Works

Agenda

- Welcome and Introductions
- Project Information
- Concept Scenarios
- Survey
- Public Comments & Questions

2022-2027

BOND

PROGRAM

City of San Antonio



PROPOSED 2022-2027

BOND PROGRAM

City of San Antonio



INFORMATION GUIDE



APPROVED

May 7, 2022

Heritage Neighborhood Park

Project Scope

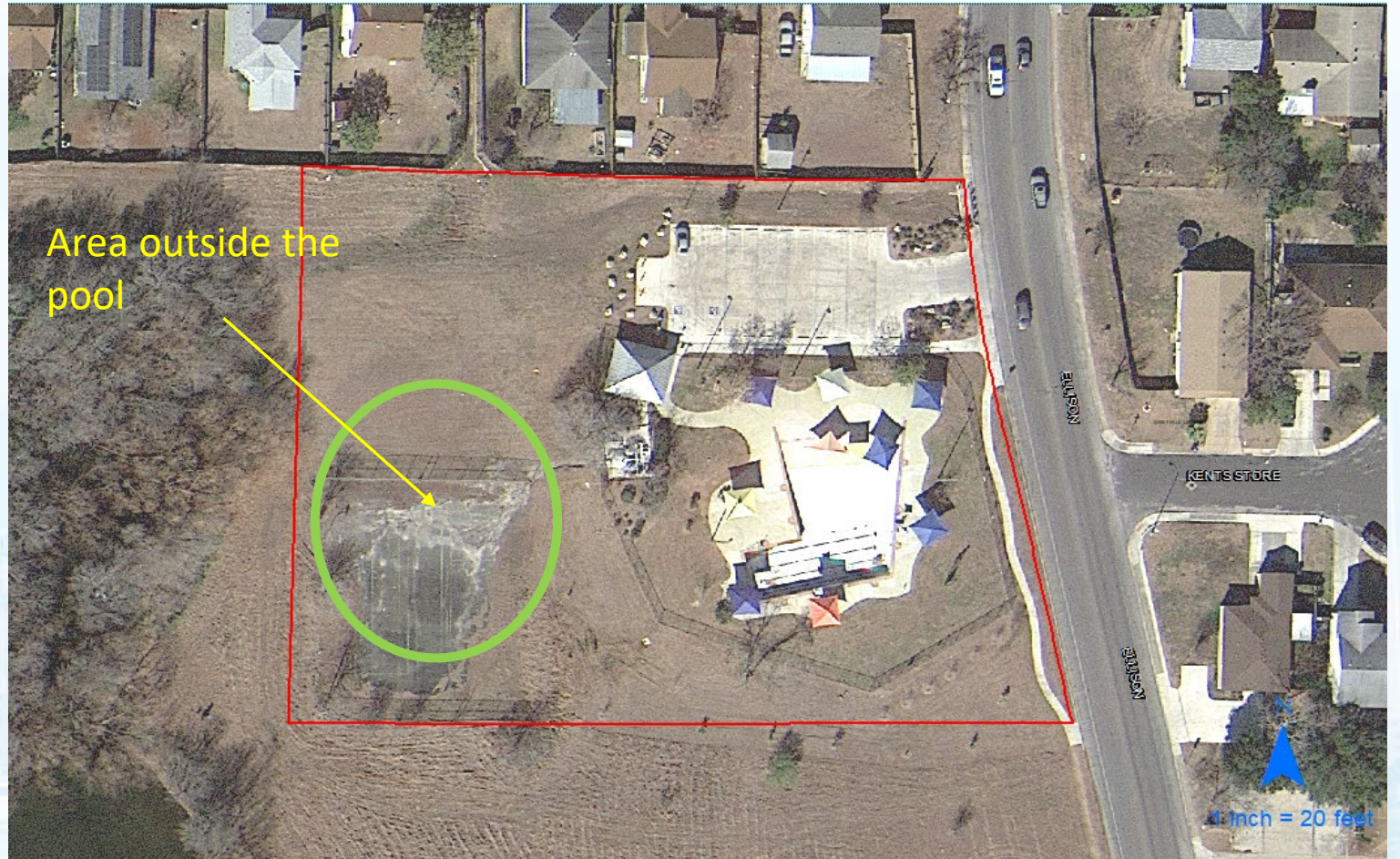
- Project Funds are \$800K,
- Construction budget is \$629,640.(79%).
- Bond Language: Construct general park improvements within available funding which may include trail development, basketball court shade enhancements, lighting, and other improvements.



Heritage Neighborhood Park

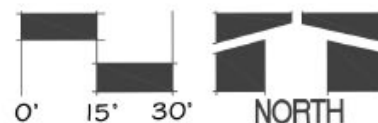
Existing Site

- Trail connector to the pool area and future community center
- Allows for picnic areas with seating, trash/recycle receptacles and new pickleball courts
- Includes new tree plantings
- Use of existing court pad



LEGEND

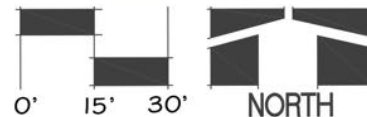
- A** PICKLEBALL COURT (20'x 44' REGULATION SIZE)
- B** EXISTING CONCRETE PAD; CLEANING, PREP, RESURFACING / STRIPING
- C** NODE; INCLUDES CONCRETE PAD, 15'x15' SHADE CANOPY, PICNIC TABLE, TRASH/RECYCLING RECEPTACLE
- D** EXISTING POOL FACILITY
- E** EXISTING PARKING / VEHICULAR ACCESS
- F** TRAIL CONNECTOR FROM EXISTING POOL / COMMUNITY CENTER TO PICKLEBALL COURTS
- G** PROPOSED SHADE TREE PLANTINGS
- H** EXISTING TREES



PICKLEBALL COURT IMPROVEMENTS
SCHEMATIC OPTION A HERITAGE PARK, SAN ANTONIO, TX
 SCALE- 1:30 12/8/22 HALFF ASSOC.

LEGEND

- A** PICKLEBALL COURT (20'x 44' REGULATION SIZE)
- B** EXISTING CONCRETE PAD; CUT, CLEANING, PREP, RESURFACING / STRIPING
- C** NODE; INCLUDES CONCRETE PAD, 15'x15' SHADE CANOPY, PICNIC TABLE, TRASH/RECYCLING RECEPTACLE
- D** EXISTING CONCRETE PAD; CUTTING, CLEANING, PREP, RESURFACING, W/15'x15' SHADE CANOPIES, PICNIC TABLES, AND TRASH / RECYCLING RECEPTACLES
- E** EXISTING POOL FACILITY
- F** EXISTING PARKING / VEHICULAR ACCESS
- G** TRAIL CONNECTOR FROM EXISTING POOL / COMMUNITY CENTER TO PICKLEBALL COURTS
- H** PROPOSED SHADE TREE PLANTINGS
- I** PROPOSED 4' PERIMETER FENCE
- J** EXISTING TREES



PICKLEBALL COURT IMPROVEMENTS
SCHEMATIC OPTION B HERITAGE PARK, SAN ANTONIO, TX
 SCALE- 1:30 1/3/2023 HALFF ASSOC.

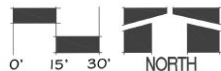
Heritage Neighborhood Park

Tell Us Your Preferred Option

■ Concept Plans

LEGEND

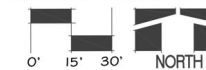
- A PICKLEBALL COURT (20' x 44' REGULATION SIZE)
- B EXISTING CONCRETE PAD; CLEANING, PREP, RESURFACING / STRIPING
- C NODE: INCLUDES CONCRETE PAD, 15'x15' SHADE CANOPY, PICNIC TABLE, TRASH/RECYCLING RECEPTACLE
- D EXISTING POOL FACILITY
- E EXISTING PARKING / VEHICULAR ACCESS
- F TRAIL CONNECTOR FROM EXISTING POOL / COMMUNITY CENTER TO PICKLEBALL COURTS
- G PROPOSED SHADE TREE PLANTINGS
- H EXISTING TREES



PICKLEBALL COURT IMPROVEMENTS
SCHEMATIC OPTION A HERITAGE PARK, SAN ANTONIO, TX
SCALE: 1:30 12/8/22 HALFF ASSOC.

LEGEND

- A PICKLEBALL COURT (20' x 44' REGULATION SIZE)
- B EXISTING CONCRETE PAD; CUT, CLEANING, PREP, RESURFACING / STRIPING
- C NODE: INCLUDES CONCRETE PAD, 15'x15' SHADE CANOPY, PICNIC TABLE, TRASH/RECYCLING RECEPTACLE
- D EXISTING CONCRETE PAD; CUTTING, CLEANING, PREP, RESURFACING, 15'x15' SHADE CANOPIES, PICNIC TABLES, AND TRASH / RECYCLING RECEPTACLES
- E EXISTING POOL FACILITY
- F EXISTING PARKING / VEHICULAR ACCESS
- G TRAIL CONNECTOR FROM EXISTING POOL / COMMUNITY CENTER TO PICKLEBALL COURTS
- H PROPOSED SHADE TREE PLANTINGS
- I PROPOSED 4' PERIMETER FENCE
- J EXISTING TREES



PICKLEBALL COURT IMPROVEMENTS
SCHEMATIC OPTION B HERITAGE PARK, SAN ANTONIO, TX
SCALE: 1:30 1/3/2023 HALFF ASSOC.

Cathleen Crabb
Sr. Architect
(210) 207-2737
Cathleen.crabb@sanantonio.gov

CONNECT WITH US!



#SA2022Bond | www.sanantonio.gov/2022Bond